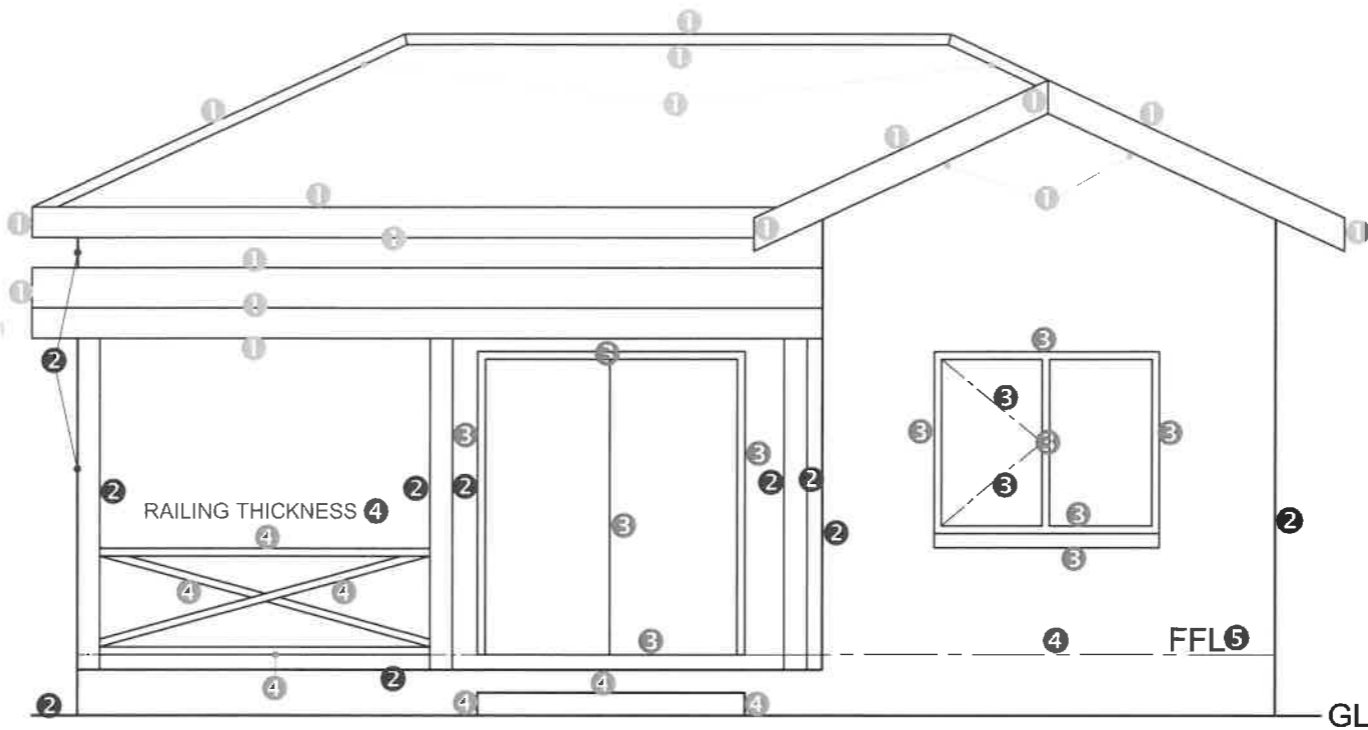
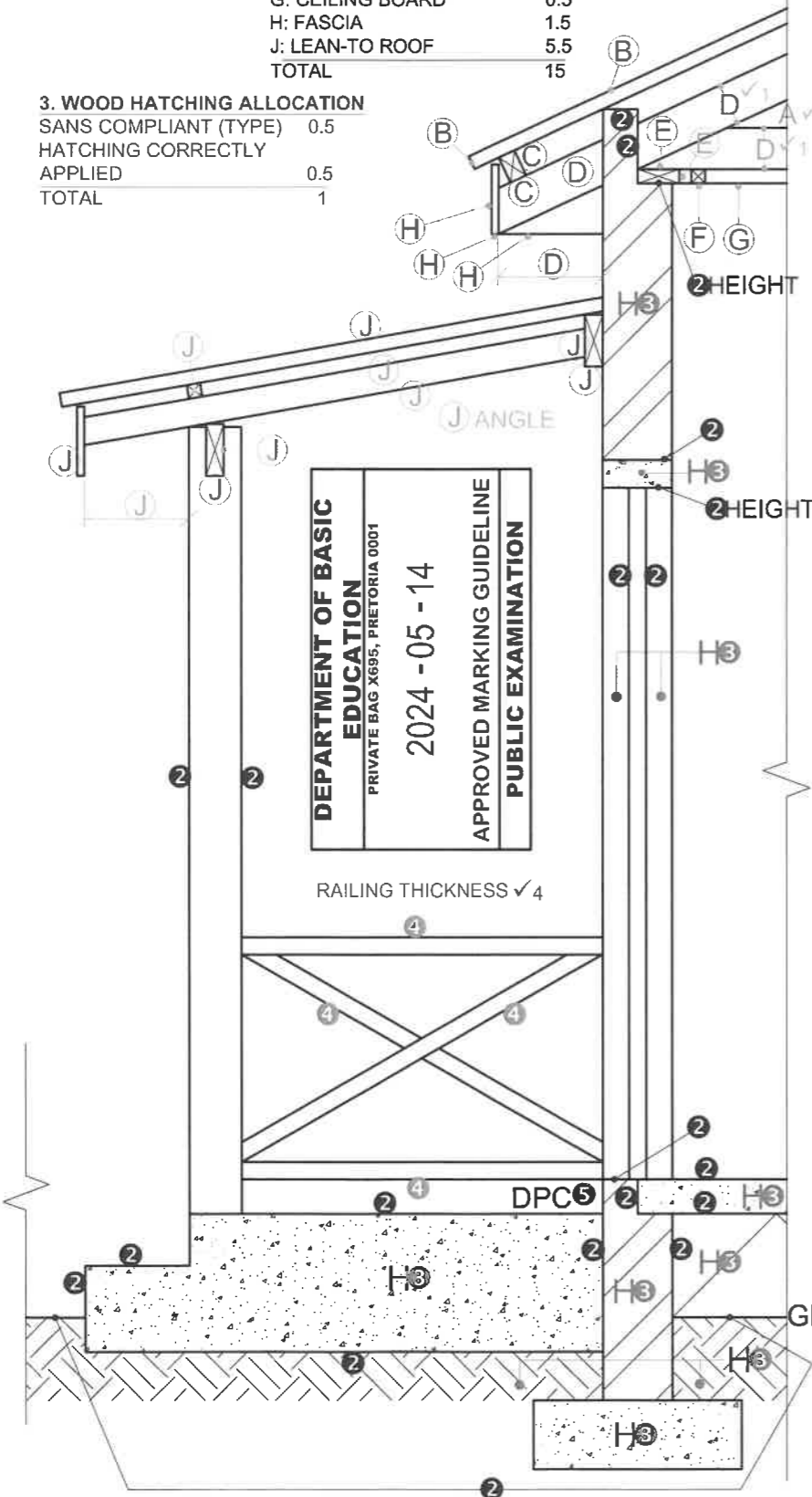


1. MARK ALLOCATION FOR ROOF

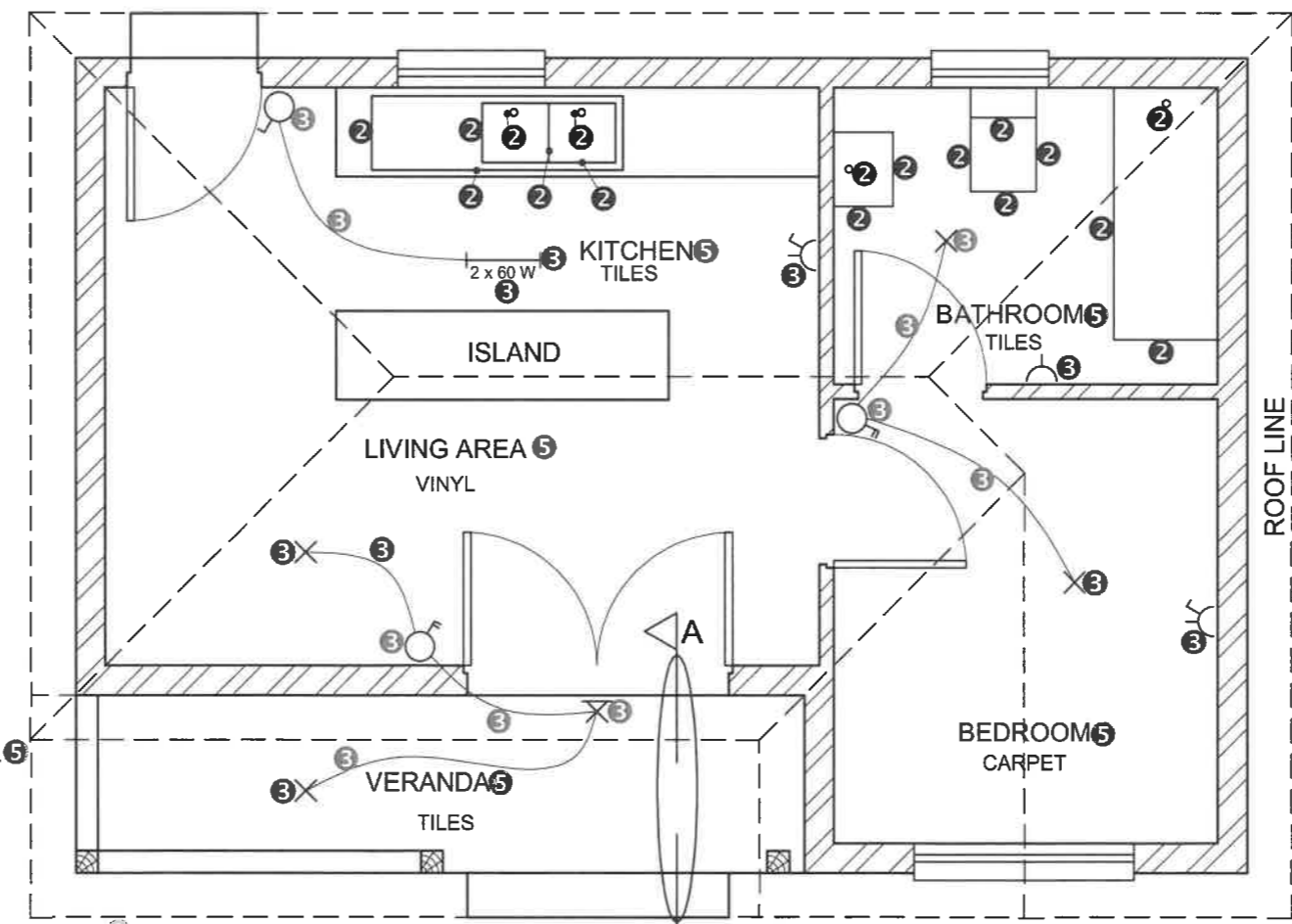
A: ROOF ANGLE	1
B: ROOF SHEET	1
C: PURLIN	1
D: TRUSS + OVERHANG	3
E: WALL PLATE	1
F: BRANDING	0.5
G: CEILING BOARD	0.5
H: FASCIA	1.5
J: LEAN-TO ROOF	5.5
TOTAL	15

3. WOOD HATCHING ALLOCATION

SANS COMPLIANT (TYPE)	0.5
HATCHING CORRECTLY APPLIED	0.5
TOTAL	1



WEST ELEVATION



FLOOR PLAN SCALE 1 : 50

DETAIL OF MARK ALLOCATION FOR A WINDOW (2 x 3 windows = 6)

DETAIL OF MARK ALLOCATION FOR A DOOR (1 x 5 doors = 5)

4 HATCHING ALLOCATION SANS COMPLIANT (TYPE) 1
 HATCHING CORRECTLY APPLIED 2
 HATCHING OF WOODEN POSTS 1
TOTAL 4

MARK ALLOCATION FOR SECTION OF ROOF		FOR OFFICIAL USE ONLY	
A		INCORRECT SCALE(S) USED	
B		NON-ALIGNMENT OF VIEWS	
C		VIEW(S) ROTATED	
D		SECTION VIEWED INCORRECTLY	
E		INCORRECT LETTERING	
F		NOT USING BREAK LINES	
G			
H			
J			
TOTAL		TOTAL	

ASSESSMENT CRITERIA

FLOOR PLAN

	POSSIBLE	OBTAINED	SIGN	MODERATED
1 DOORS + WINDOWS	11			
2 FIXTURES	8 1/2			
3 ELECTRICAL	9 1/2			
4 HATCHING	4			
5 LABELS	2 1/2			
SUBTOTAL	35 1/2			

WEST ELEVATION

1 ROOF + LEAN-TO	8 1/2			
2 WALLS + POSTS + VERANDA	5			
3 DOORS + WINDOW	6 1/2			
4 STEP + FFL + RAILING	4 1/2			
5 LABELS	1/2			
SUBTOTAL	25			

DETAILED SECTION

1 ROOF DETAIL	15			
2 SLAB + WALL + STEPS + POST	10			
3 HATCHING	5 1/2			
4 RAILING	3			
5 LABELS	1			
SUBTOTAL	34 1/2			
TOTAL	95			

PENALTIES (-)				
GRAND TOTAL				