

CENTRE NUMBER: EXAMINATION NUMBER: **ANSWER SHEET 2**

NO.	QUESTION	ANSWER	MARKS
1	Identify the elevation in FIGURE A.		1
2	Describe the type of house that is indicated in FIGURE A.		1
3	Identify number 1.		1
4	Identify number 3.		1
5	Identify number 4.		1
6	Identify the fastener indicated by number 5.		1
7	Identify number 6.		1
8	Identify number 7.		1
9	Identify number 8.		1
10	What does <i>DPM</i> stand for, as indicated in the notes?		1
11	Identify number 10.		1
12	Recommend a suitable material that can be used for the manufacturing of number 2 in FIGURE A.		1
13	Name the TWO elevations on which number 2 is installed.		2
14	Describe the purpose of number 3.		1
15	Deduce ONE feature that has been omitted from the elevation in FIGURE A.		1
16	Recommend any TWO sanitary fittings carrying waste-water, other than a bath, that can be installed in the room indicated by number 11.		2



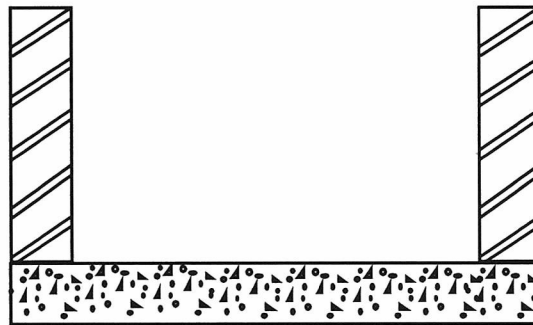
17	What sanitary fixture carrying soil water can be installed in the room indicated by number 12?		1
18	Describe the error that appears at number 6 in the elevation in FIGURE A.		1
19	State the reference code for this plan.		1
20	Which room will number 13 serve?		1
21	What does the line between numbers 13 and 14 represent?		1
22	Differentiate between number 15 in FIGURE B and number 17 in the notes.		2
23	Explain the installation of brick force from the top of the window to the wall plate, as indicated by the architect.		1
24	Recommend a possible finish for the outside walls of the house.		1
25	Deduce from FIGURE 2 which elevation does NOT have windows.		1
26	Deduce the thickness of the external wall from FIGURE 2.		1
27	Name a material that can be used to close the open sides of number 16.		1
28	Name the town in which the proposed dwelling will be build.		1
29	Calculate the area of the bathroom. Show ALL calculations. Give your answer in m ² .		3
30	Calculate the total length of the wall on the eastern side of the building. Show ALL calculations. The length must be indicated in metres.		6
		TOTAL:	40



CENTRE NUMBER:

EXAMINATION NUMBER:

ANSWER SHEET 3.6

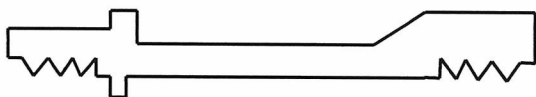
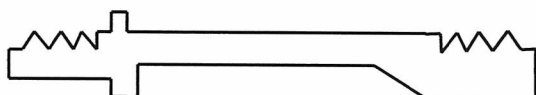


ASSESSMENT CRITERIA	MARK	CANDIDATE'S MARK
Manhole cover and frame	3	
Pipe channel	2	
Sloping concrete/mortar/benching	2	
Correctness of drawing	1	
TOTAL:	8	

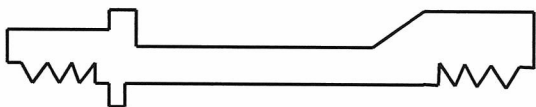
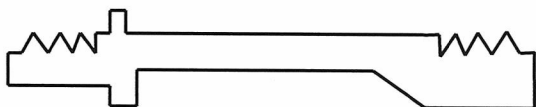
CENTRE NUMBER:

EXAMINATION NUMBER:

ANSWER SHEET 4.1



OPEN NON-RETURN VALVE



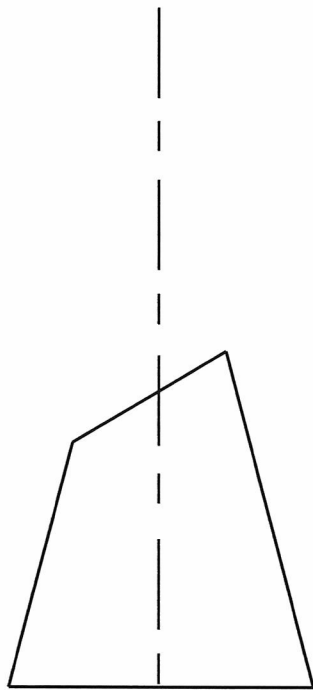
CLOSED NON-RETURN VALVE

ASSESSMENT CRITERIA	MARK	CANDIDATE'S MARK
Open non-return valve		
Correct position of ball	2	
Correct position of spring	1	
Closed non-return valve		
Correct position of ball	2	
Correct position of spring	1	
TOTAL:	6	

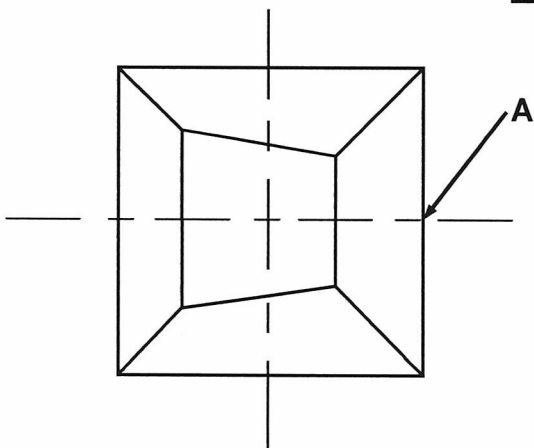
CENTRE NUMBER:

EXAMINATION NUMBER:

ANSWER SHEET 5.7



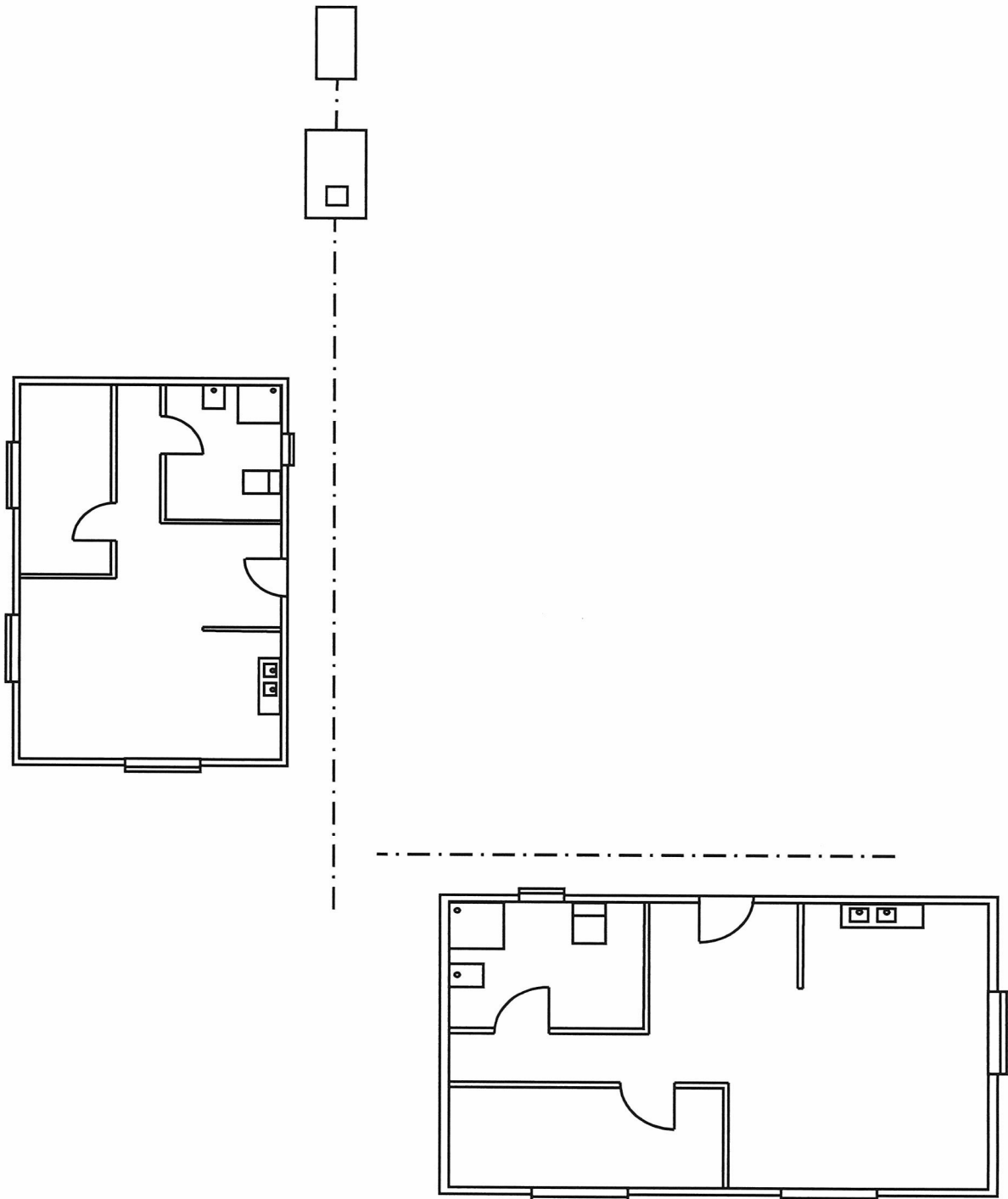
NO.	ASSESSMENT CRITERIA	MARK	CANDIDATE'S MARK
1	Projection lines to determine the apex	2	
2	Determine true length	3	
3	Top and bottom arc of pyramid	2	
4	Development of base of pyramid	5	
5	Development of top of pyramid	5	
6	5 mm seams	2	
TOTAL:		19	



CENTRE NUMBER:

EXAMINATION NUMBER:

ANSWER SHEET 6.5



ASSESSMENT CRITERIA	MARK	CANDIDATE'S MARK
Branch pipes drawn correctly	5	
Vent pipes indicated correctly	2	
Gulleys indicated correctly	2	
Junction of two main sewer pipes at 45°	1	
Rodding eyes	2	
Inspection eyes	2	
TOTAL:	14	

